

An exceptional opportunity to purchase a residential plot located in Elviria one of the most desirable areas of Marbella East.

This plot measuring 1,282 m², is situated along a quiet street, offering tranquility, and beautiful views surrounded by nature. Its perfect for constructing a modern villa of approximately 256 m² plus a basement with 4 bedroom and a swimming pool. The plot is fully equipped with essential services such as water, electricity and sewage system.

This plot is ideal for:

- Families looking to build a primary residence in a peaceful yet well-connected area
- Buyers seeking to create a luxury holiday home close to the beach and amenities
- Developers interested in a prime location for a high-demand resale opportunity

Located just a 4-minute drive from the Elviria commercial center, with easy access to all essential services, including supermarkets, shops, restaurants, and cafés and 6 minutes from the beautiful sandy beaches. Charming beach restaurants and the famous beach club Nikki Beach is situated just next to the five-star luxury Hotel Don Carlos.

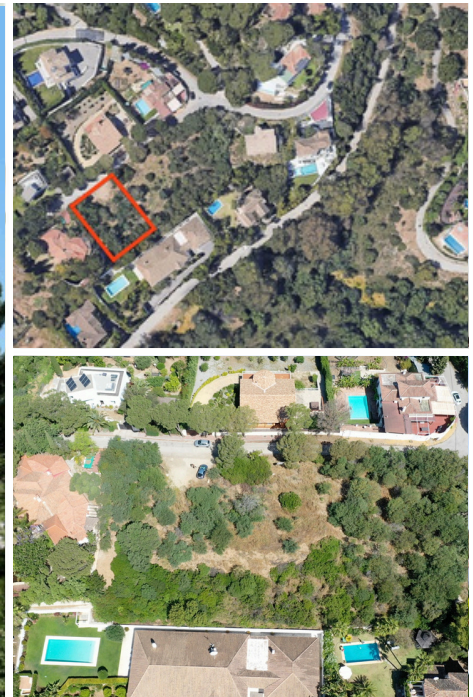
Elviria is a well-established and upscale residential community known for its natural beauty, excellent infrastructure, and strategic location. It is just:

- 15 minutes from Marbella town center
- 25 minutes from Malaga International Airport.

Families will appreciate the proximity to top international schools such as the English International College, Deutsche Schule, and Colegio Ecos.

Additionally, golf enthusiasts will appreciate the proximity of Santa María and Santa Clara golf courses. For those seeking even more golfing options, Golf Club Marbella and Golf Rio Real are just a short drive away.

This is a rare chance to secure a plot in a peaceful, green area with excellent potential for capital appreciation. Whether you're planning to build a permanent home, a vacation retreat, or a profitable investment property, this location offers the best of all worlds.



for sale **319,000 €**

plot _{m²} **1,282**

